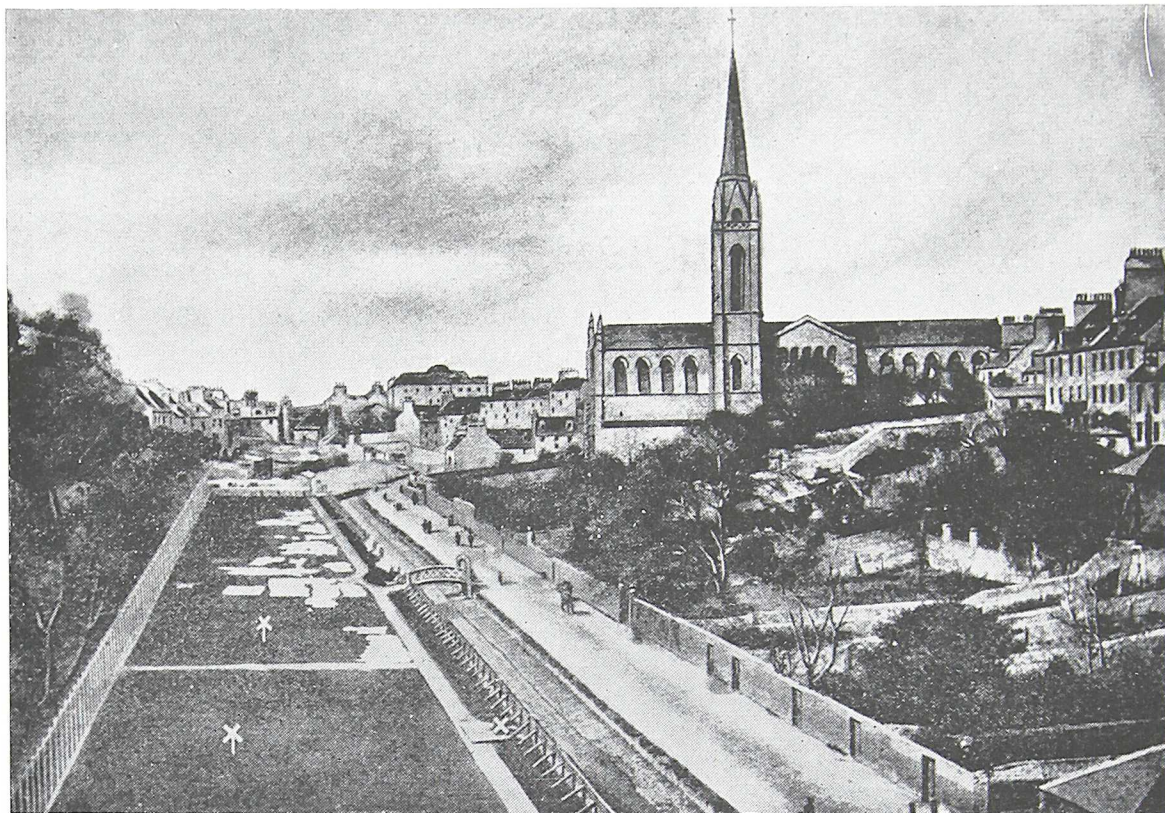


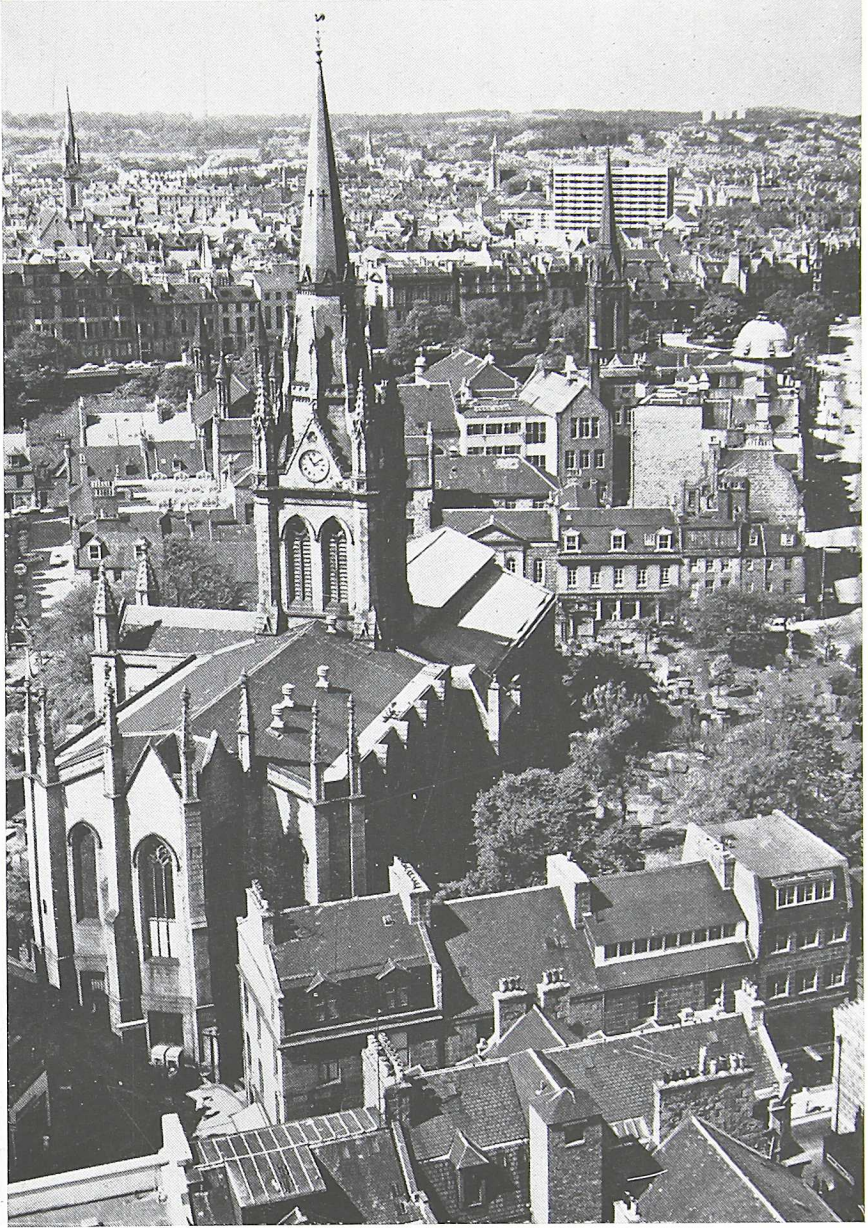
(Photograph copyright of Aberdeen Journals Ltd. and is reproduced by permission)

PLATE 1 Photograph of the St Nicholas churches taken from the south before the great fire of 1874 which destroyed the East church and the steeple.



(Photograph copyright of Aberdeen Journals Ltd. and is reproduced by permission)

PLATE 2 Impression of the view north from Union Bridge shortly after the construction of the Triple church. Despite the construction of the railway (1865) and Rosemount Viaduct (1883), this view up the Denburn valley is still easily recognizable.



(Photograph copyright of Aberdeen Journals Ltd. and is reproduced by permission)

PLATE 3 Modern view of the St Nicholas churches. The brick spire of the Triple church is immediately to the right.



PLATE 4 St Mary's Chapel

(Photograph copyright of Aberdeen Journals Ltd. and is reproduced by permission)